

DynaStar®

High Temperature Sanitizing Door-type

Standard Features

- ▶ Built-in 40-70 °F rise booster heater with Sani-Sure™ final rinse system ensures proper rinse water temperature
- ▶ Adjustable rinse system
 - Econo uses 0.70 gallons per rack
 - Turbo uses 0.89 gallons per rack
- ▶ Pumped rinse for consistent rinse pressure
- ▶ Automatic tank fill
- ▶ Door-actuated start
- ▶ Three (3) selectable timed cycles
- ▶ Digital LED display
- ▶ Onboard service diagnostics
- ▶ Delime cycle
- ▶ 17 1/2" (445 mm) vertical chamber clearance
- ▶ Triple wash arm provides consistent and reliable washing performance
- ▶ Specially designed stainless steel nozzles provide superior cleaning action
- ▶ Interchangeable upper and lower wash/rinse arms
- ▶ 1 HP stainless steel wash pump motor
- ▶ Vent fan control shuts vent fan off when machine is idle
- ▶ Interchangeable scrap baskets
- ▶ Single point connections for all utilities
- ▶ Field convertible from straight through to corner and vice versa (kit required)
- ▶ Field convertible from 3-phase to single phase and vice versa (kit required)
- ▶ Low watt density electric wash tank heater
- ▶ Hi-limit thermostat and low water protection
- ▶ Detergent/rinse additive signal connection fuse box
- ▶ Front and side stainless steel dress panels
- ▶ Adjustable bullet feet
- ▶ Durable stainless steel construction



Specification Statement

Specified unit will be a Jackson DynaStar high temperature sanitizing door-type dishwasher, rated to NSF/ANSI Standard 3 by ETL Sanitation. Unit will be ENERGY STAR® certified. Unit to be rated for 62 racks per hour, 0.70 gallons per rack, and will include a built-in 40-70 °F rise booster heater with Sani-Sure™ final rinse system, three (3) selectable timed cycles, solid-state controls with digital LED temperature/operator display and service diagnostics. Unit will have an adjustable rinse system, Econo Rinse uses 0.70 gallons per rack; Turbo Rinse uses 0.89 gallons per rack. Other features include automatic tank fill, delime cycle, triple wash arm, pumped final rinse, vent fan control, and 1 HP stainless steel wash pump motor. Constructed of durable stainless steel with adjustable bullet feet.

1-year parts and labor warranty.

Options & Accessories

- ▶ 460v Electrical
- ▶ Single Phase
- ▶ Drain Water Tempering Kit
- ▶ Water Hammer Arrestor
- ▶ Door Interlock
- ▶ False Panel (for corner installations)
- ▶ Flanged Feet
- ▶ Security Package
- ▶ Scaltrol
- ▶ Replacement Cartridge for Scaltrol
- ▶ 36-Compartment Rack
 - 4-1/8" tall (105 mm)
 - 5-5/8" tall (143 mm)
 - 7" tall (178 mm)
- ▶ Combination Rack
- ▶ Peg Rack



Cleanability

Our triple wash arm is engineered to focus more water on the dishes for superior cleaning performance. Our adjustable rinse system keeps you in control. Choose Econo or Turbo based on the soil level of each load.

Operation

Easy-to-read digital controls, a full wrap tubular handle, and a door-activated drain closure make operation of the DynaStar a breeze.

Serviceability

Ease of serviceability is important to Jackson, so the DynaStar was designed to make service access easy. All service parts can be accessed while the unit is in place, so there is no need to pull it from the wall or disconnect tables.



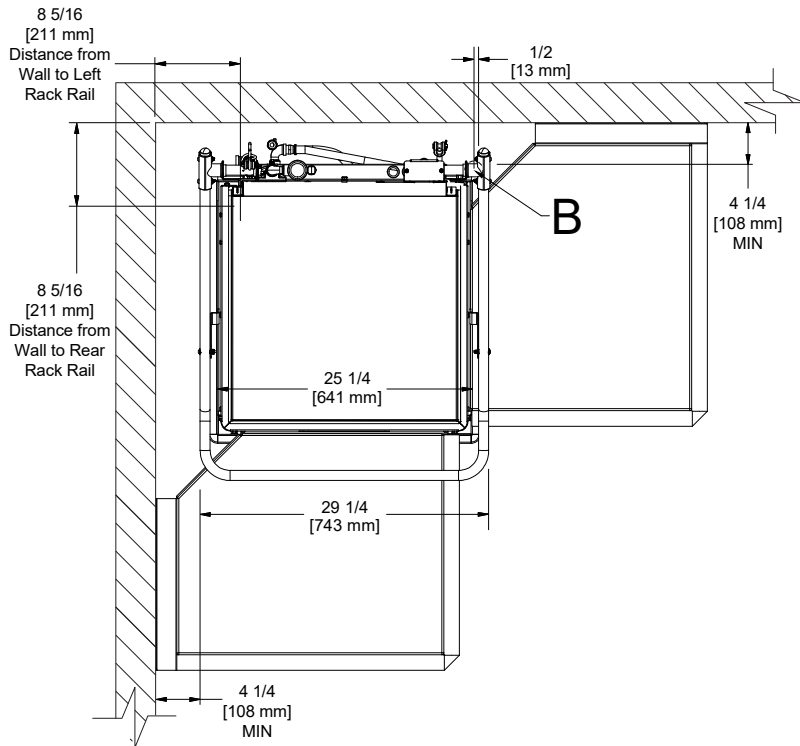
Digital LED Display



Triple Wash Arm



Interchangeable Scrap Baskets

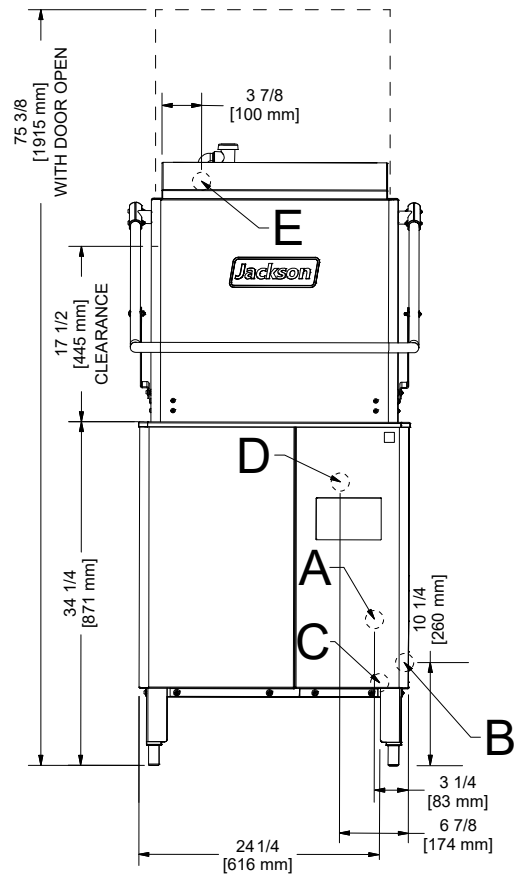
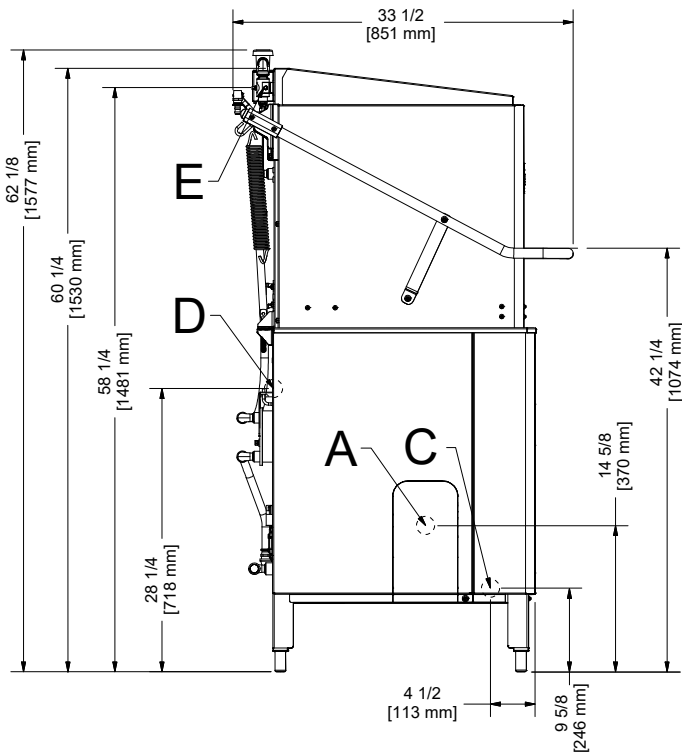


LEGEND

- A - Drain Connection (1 1/2" NPT)
- B - Water Inlet (1/2" NPT)
- C - Electrical Connection
- D - Detergent Connection
- E - Rinse-aid Connection

All dimensions from floor can be increased 1 1/8" using the machine's adjustable feet.

Dish tables are stationary, so the machine must be moved until rack rails line-up properly. As a result, distances from wall to rack rails might vary.





Warewashing Systems

Operating Capacity (Cycle I)

Racks per Hour	62 (57)*
Dishes per Hour	1,550
Glasses per Hour	2,232

Operating Temperature

Wash Temperature (minimum)	150 °F/66 °C
Rinse Temperature (minimum)	180 °F/82 °C

Operating Cycle (seconds)

	Wash	Rinse	Dwell	Total Cycle
Cycle I	40	11	07	58
Cycle II	90	11	07	108
Cycle III	220	11	07	238

Water Consumption

Gallons per Rack (Econo rinse)	0.70 (2.7 L)
Gallons per Rack (Turbo rinse)	0.89 (3.4 L)
Gallons per Hour (Econo rinse)	43.40 (164.3 L)
Gallons per Hour (Econo rinse)**	39.90 (151.0 L)
Gallons per Hour (Turbo rinse)	55.18 (208.9 L)
Gallons per Hour (Turbo rinse)**	50.73 (192.0 L)
Wash Tank Capacity (gallons)	8.00 (30.3 L)
Booster Tank Capacity (gallons)	1.66 (6.3 L)

Water Requirements

Incoming Water Temperature	110 °F/43 °C
Flow Pressure (PSI)	
DynaStar	15-65
DynaStar W/O (no booster)	10 ± 2
Incoming Water Connection (NPT)	1/2"
Drain Connection (NPT)	1 1/2"

Electrical Specifications

Wash Pump Motor (HP)	
208v	1
230v	1
460v	3/4
Wash Tank Heater (kW)	
208v	4.1
230v	5.2
460v	5.0
Rinse Tank Heater (kW)	
208v	9.0
230v	11.2
460v	9.2

Model	Power Supply	Total Load	Minimum Circuit Ampacity	Maximum Overcurrent Protection
70 °F Rise	208/60/3	42.2 A	43.4 A	45.0 A
	230/60/3	47.0 A	48.2 A	50.0 A
	460/60/3	19.8 A	20.2 A	25.0 A
	208/60/1	68.8 A	70.1 A	75.0 A
	230/60/1	77.1 A	78.4 A	80.0 A
No Booster	208/60/3	16.4 A	17.6 A	20.0 A
	230/30/3	18.1 A	19.4 A	20.0 A
	460/60/3	7.5 A	7.8 A	15.0 A
	208/60/1	24.7 A	25.9 A	30.0 A
	230/60/1	27.7 A	29.0 A	30.0 A

Dimensions

Width	28 3/4" (731 mm)
Depth	34" (863 mm)
Height	62 1/8" (1577 mm)
Height with Door Open	75 3/8" (1915 mm)
Inside Clearance Height	17 1/2" (445 mm)
Wall Clearance	4 1/4" (108 mm)
Drain Height	14 5/8" (370 mm)

Shipping Details

Shipping Weight	366 lbs (166 kg)
Shipping Width	33" (838 mm)
Shipping Depth	42" (1067 mm)
Shipping Height	66 1/2" (1689 mm)
Shipping Cube	53.34 cu ft
Shipping Class	150

Advisory: Jackson WWS, Inc. DOES NOT endorse "Tankless On-Demand" water heaters for use with our dishmachines. Jackson WWS, Inc. DOES endorse, and highly recommends, standard "tank" style water heaters, sized to properly handle the water heating requirements of the facility.

*Racks per hour calculated with NSF suggested load time of :05 for door-type (straight thru) dishmachines.

**Gallons per hour calculated with NSF suggested load time of :05 for door-type (straight thru) dishmachines.

Because the DynaStar is equipped with a pumped rinse, a PRV is not required unless flow pressure is over 65 PSI. Flow pressure under 15 PSI could affect fill/start-up time. DynaStar W/O (no booster) is not equipped with a rinse pump, so a PRV is recommended and flow pressure is 10 ± 2 PSI.

Contact Jackson

07610-004-69-78 [02/09/22]

Address

6209 N U.S. Highway 25E
Gray, Kentucky 40734

Telephone & Fax

T 888.800.5672
F 606.523.1799

Email

customer.service@jacksonwws.com



We reserve the right to change specifications in this document without incurring any obligation for equipment previously or subsequently sold.