



# ELECTRIC

**IMPERIAL**

## SPEC SERIES 36" WAFER PLATE RANGES



### IHR-6-EW

Shown with optional casters



10" x 10" wafer heating elements heat up to 650°.



High performance 5.3 KW element provides even heating throughout the oven.

## PLATE ELEMENTS

- 650° maximum temperature heats food up to 50% faster.
- Heating elements are 10" x 10" (254 x 254) for maximum pan contact.
- Features 12" x 12" (305 x 305) wafer plates in front, and 12" x 13" (305 x 330) in rear.
- Solid top prevents spills from entering unit for easy clean-up.
- 3.75 KW wafer plate elements with easy-to-clean flat surface.
- Thermostatic controlled plates

## STANDARD OVEN

- Baffle above the element distributes heat flow to provide even cooking temperatures throughout the 5.3 KW oven. Splatter screen protects the element from spills.
- Chef depth oven interior accommodates standard 18" x 26" (457 x 660 mm) sheet pans front-to-back and side-by-side.
- Oven is 26½" w x 26" d x 14" h (673 x 660 x 356 mm)
- Heavy duty thermostat with temperature range from 150°F to 500°F (65°C to 260°C)
- Porcelainized sides, rear, deck and inner door liner.
- Side oven controls are protected from heat in an insulated side compartment
- Stamped inner door liner provides extra strength while improving heat retention.
- Splatter screen protects the element from spills.
- One chrome oven rack is included.

## EXTERIOR FEATURES

- Stainless steel front, sides, backguard, shelf, landing ledge and kick plate.
- Welded and polished stainless steel seams.
- Large 4" (101 mm) stainless steel landing ledge
- 6" (152 mm) heavy duty legs with adjustable feet
- One year parts and labor warranty.

## CONVECTION OVEN

- 5.3 KW convection oven with 1/2 hp blower motor cooks products quickly and evenly with less shrinkage.
- Convection oven interior dimensions 26-½" w 22-½" d x 14" h (673 x 572 x 356 mm).
- Three position switch for cooking or cool down. Fan shuts off automatically when door is open.
- Porcelainized sides, rear, deck and door lining for easy cleaning.
- Three chrome oven racks included.

**MADE IN USA****IMPERIAL**

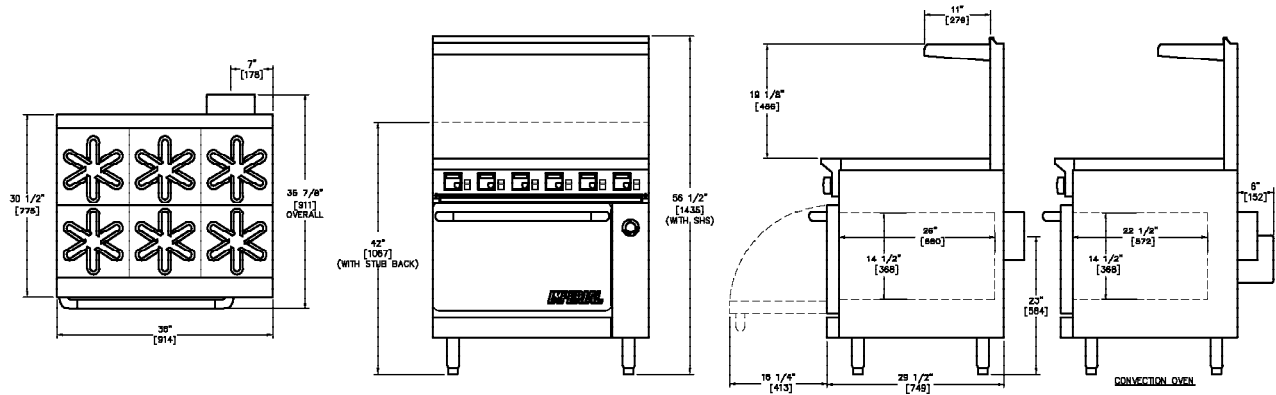
1128 Sherborn Street | Corona, CA 92879 | 800.343.7790 | [imperialrange.com](http://imperialrange.com) | [imperialsales@imperialrange.com](mailto:imperialsales@imperialrange.com)

© 2025 Imperial Commercial Cooking Equipment Imperial reserves the right to change specifications at any time without prior notice and without any obligation for past or future equipment purchases. Visit [www.imperialrange.com](http://www.imperialrange.com) for specification updates



# ELECTRIC

## SPEC SERIES 36" WAFER PLATE RANGES



| MODEL    | PLATE ELEMENTS | SHIP WEIGHT (KG) LBS | DIMENSIONS   | CRATED DIMENSIONS                              |
|----------|----------------|----------------------|--|--|
| IHR-6-EW | 6              | (204) 450            | 36" W x 35 7/8" D x 42" H<br>(914 x 911 x 1067 mm) | 38" W x 41" D x 38" H<br>(965 x 1041 x 965 mm) |

### ELECTRICAL REQUIREMENTS

| MODEL       | TOTAL KW | VOLTS | PHASE | AMPS Box A | AMPS Box B |
|-------------|----------|-------|-------|------------|------------|
| IHR-6-EW    | 27.8     | 208   | 3     | 32         | 55         |
|             |          | 240   | 3     | 28         | 48         |
|             |          | 480*  | 3     | 14         | 24         |
| IHR-6-EW-C  | 28.7     | 208   | 3     | 32         | 60         |
|             |          | 240   | 3     | 28         | 52         |
|             |          | 480*  | 3     | 14         | 26         |
| IHR-6-EW-XB | 22.5     | 208   | 3     | 32         | 32         |
|             |          | 240   | 3     | 28         | 28         |
|             |          | 480*  | 3     | 14         | 14         |

### OPTIONS AND ACCESSORIES

- 6" (152 mm) stainless steel stub back, in lieu of standard backguard
- 11" (279 mm) stainless steel stub back, in lieu of standard backguard
- Reinforcement channels for mounting cheesemelter or salamander
- Extra oven racks
- Griddle top
- 6" (152 mm) casters
- 480 volts, 3 phase

### CLEARANCE REQUIREMENTS

For use only on non-combustible floors. Legs or casters are required for non-combustible floors; or 2" (51 mm) overhang is required when curb mounted. Provide 0" clearance from non-combustible surfaces and 6" (152 mm) from combustible surfaces.



**MADE IN USA**

Notes: Measurements in ( ) are metric equivalents.

Contact Imperial about additional single phase options.

\*Additional charge



1128 Sherborn Street | Corona, CA 92879 | 800.343.7790 | [imperialrange.com](http://imperialrange.com) | [imperialsales@imperialrange.com](mailto:imperialsales@imperialrange.com)

© 2025 Imperial Commercial Cooking Equipment Imperial reserves the right to change specifications at any time without prior notice and without any obligation for past or future equipment purchases. Visit [www.imperialrange.com](http://www.imperialrange.com) for specification updates